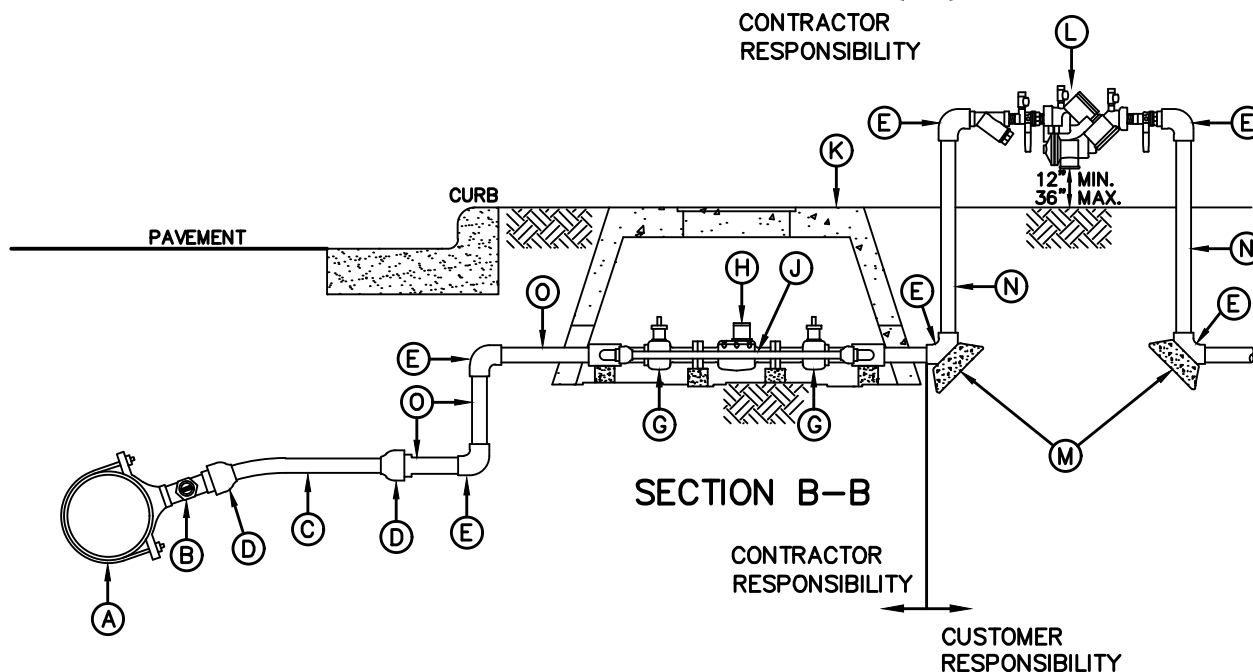


PLAN VIEW

CONTRACTOR RESPONSIBILITY

CUSTOMER RESPONSIBILITY



SECTION B-B

CONTRACTOR RESPONSIBILITY

CUSTOMER RESPONSIBILITY

GENERAL NOTES:

1. DETAIL SHOWN FOR 1½" SERVICE; INSTALLATION SIMILAR FOR 2" SERVICE EXCEPT FOR SIZES OF PIPE, FITTINGS, METER AND METER BOX. WHEN SPECIFIED A 1" BY-PASS METER SHALL BE INSTALLED WITH A 1½" SERVICE, A 2" SERVICE SHALL INCLUDE A 1" BY-PASS METER.
2. WHERE NO CURB EXISTS, METER IS TO BE SET NEAR PROPERTY LINE OR AT DESIGNATED LOCATION.
3. THE CONTRACTOR SHALL FURNISH AND INSTALL ALL NECESSARY PIPE, FITTINGS, AND METER BOXES REQUIRED. IT SHALL BE THE RESPONSIBILITY OF THE PRIVATE OWNER TO HAVE A CERTIFIED PLUMBER INSTALL A BACKFLOW PREVENTER AND EXTEND SERVICE LINE ON DISCHARGE SIDE OF METER.
4. THE EPWU WILL FURNISH AND INSTALL THE METER.

CONSTRUCTION KEY NOTES:

- A. SERVICE SADDLE
- B. 1½" TAP WITH CORPORATION STOP
- C. 1½" COPPER PIPE. FOR 1½" & 2" SERVICE INSTALLATIONS, ALL PIPING SHALL BE COPPER AND ALL FITTINGS SHALL BE BRONZE UNLESS OTHERWISE SPECIFIED.
- D. 1½" FLARED CONNECTION
- E. 1½" FEMALE THREADED 90° ELBOW
- F. 1½"x1" FEMALE THREADED TEE
- G. 1½" FLANGED BY FEMALE THREADED BALL VALVE
- H. 1½" TURBINE METER
- I. 1" FEMALE THREADED CURB VALVE WITH PADLOCK WINGS
- J. 1" COPPER
- K. METER BOX TYPE "C" (SEE DETAIL 293) FOR 1½" OR TYPE "D" (SEE DETAIL 294) FOR 2".
- L. 1½" BACKFLOW PREVENTER WHEN REQUIRED BY EPWU
- M. THRUST BLOCKING AS REQUIRED
- N. 1½" BRASS PIPE—LENGTH AS REQUIRED
- O. 1½" THREADED NIPPLE
- P. 1" FLARED BY MALE THREADED 90° ELBOW

STANDARD
DETAIL

DATE: 4/21/1998
REV: 5/10/2017

SERVICE LINE 1½" AND 2"
INSTALLATION BY CONTRACTOR

N.T.S.



DETAIL No.
290-5